



APARTMENT SAFETY & SECURITY 101

STAYING SAFE AND SECURE WHEN MOVING AWAY
FROM HOME FOR THE FIRST TIME.



LifeSmarts

Learn it. Live it.



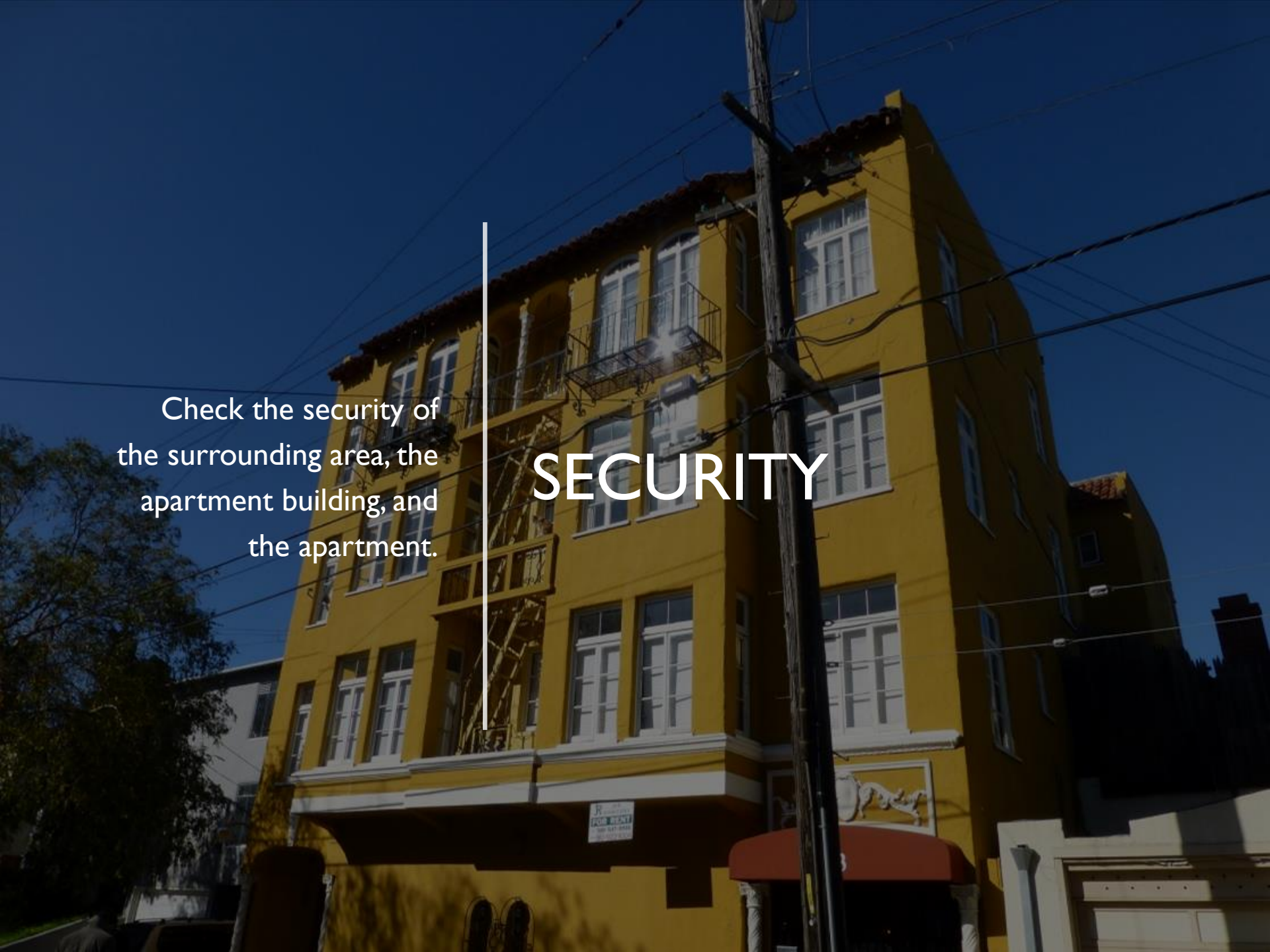
LifeSmarts is a program of the National Consumers League

CHECKING OUT THE APARTMENT

before signing a rental agreement, evaluate prospective apartments for safety and security.

Check the security of
the surrounding area, the
apartment building, and
the apartment.

SECURITY





ENTRANCES

- Inspect security lighting.
- Look for streetlights and how the parking area is illuminated at night.
- Make sure there is adequate lighting at all the entrances.



COMMON AREAS

- Inspect common spaces such as the laundry room, trash, and recycling bins for adequate lighting and security.



7

LOCKS

- Examine the door locks
 - Deadbolt locks are the most secure.
 - Check that the windows lock and that there is a security bar on all sliding glass doors.



MAIL & PACKAGE DELIVERY

- The mail and package delivery area should be secure.
- Peepholes in apartment doors provide additional security.



CAMERAS

Look for security cameras and ask the landlord if they are operational.



CRIME CHECK



- Before signing a rental agreement, contact local law enforcement and ask about the safety of the location and the crime rate there.
- Also, check into reported crime at online sites like CrimeReport.com.

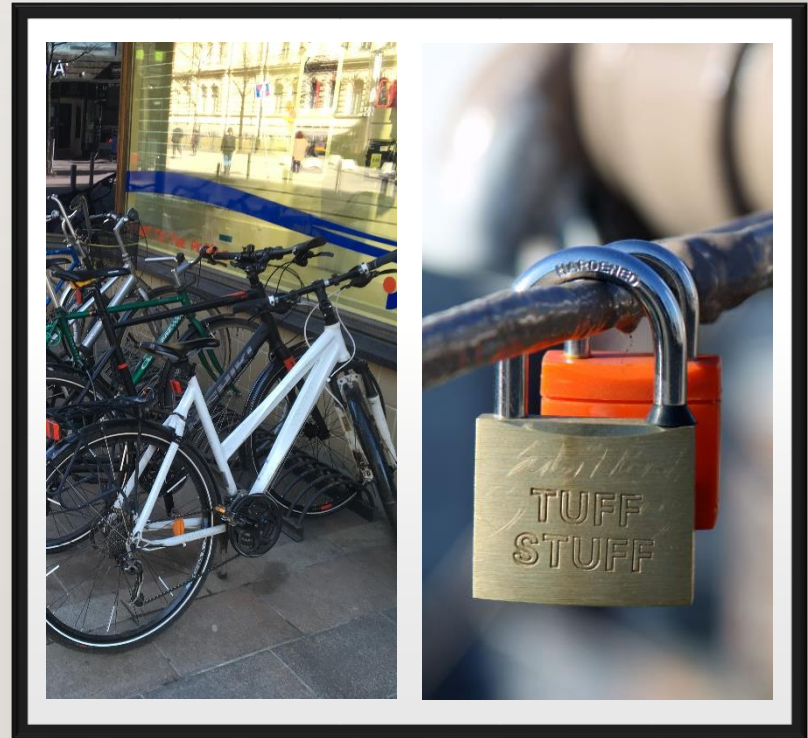
NIGHT AND DAY


- The perfect apartment may not be so perfect after the sun goes down. Before signing on the dotted line, complete a night time check of the neighborhood, the outside lighting, entrances, and parking.



STORAGE

- If there is storage space outside the apartment, check to ensure it is secure, well lit, and weatherproof.



A blue circular sign with white text that reads "BUS STOP". The sign is mounted on a metal post. The background is a blurred, warm-toned outdoor setting.

Locate the nearest public transportation stop. It should be a safe and reasonable walk at night.

PUBLIC TRANSPORTATION

SAFETY

- Use your knowledge about safety to determine if the apartment you are considering meets basic safety standards.



5 MINUTES OR LESS

- Modern buildings reach the flashover point rapidly. Know that in case of fire, there is very little time to exit.



PREVENTION

- Every apartment should have operational smoke detectors, carbon monoxide detectors, and a fire extinguisher.



Test your smoke alarms once a month.

A smoke alarm can save your life in a fire. Use the test button to make sure your smoke alarms are working.

U.S. Fire Administration | FEMA | The Department of Homeland Security





DETECTION

There are two types of technology used in residential fire alarms: ionization and photoelectric.

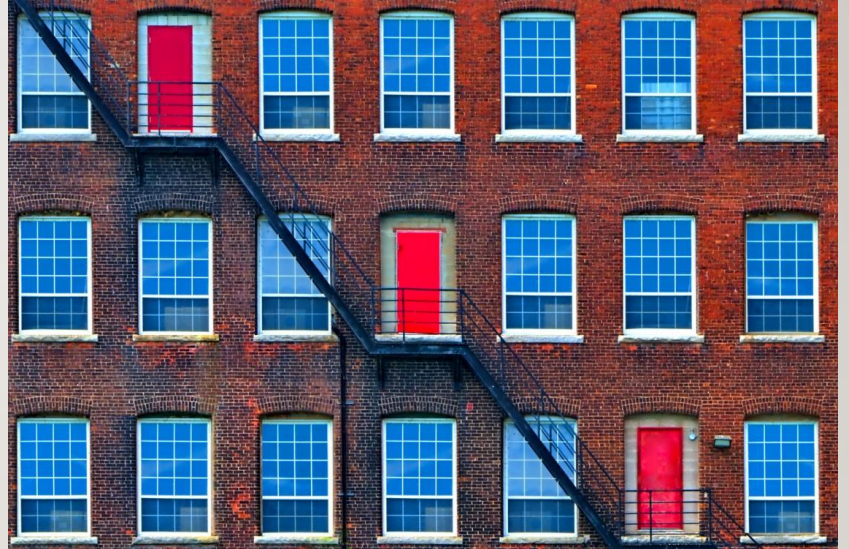
CARBON MONOXIDE ALARMS



- CO kills. It is created when fuels such as gasoline, wood, coal, natural gas or propane burn incompletely.

RESPONSIBILITY

- It is a tenant's responsibility to know and follow the apartment building's security rules and fire safety plan.



EDITH

- EDITH stands for exit drills in the home. Know how to exit your apartment in the shortest time possible.
- Plan two ways to exit the building and establish a meeting place outdoors with roommates and friends from the building.

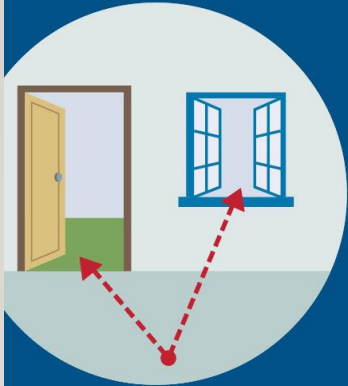


Make a fire escape plan.

Talk to your family about what you should do if there is a fire. Practice your fire escape plan at least 2 times a year.



U.S. Fire Administration |  FEMA | 

EMERGENCY EXIT PLAN



Know 2 ways out of every room.

It is important to find 2 ways out of every room in the house in case one exit is blocked or dangerous to use.

U.S. Fire Administration  FEMA 

- Inside the apartment, plan at least two ways out of every room.
- Windows, rope ladders, and exterior fire escapes are possible exits.



EXITS

Building exit doors should open outward, be unblocked and always unlocked.

“GET LOW AND GO”



- Feel the door; if the door is hot, don't open it. Use your alternate exit.
- Leave immediately, closing doors behind, and knock on other doors as you exit.
- If you must escape through smoke, crawl low under the smoke keeping your mouth covered.

ABC FIRE EXTINGUISHER

An ABC (multipurpose) fire extinguisher should be installed close to an exit.





PASS

- Pull the pin
- Aim low at the base of the fire
- Squeeze the lever slowly
- Sweep the nozzle from side to side

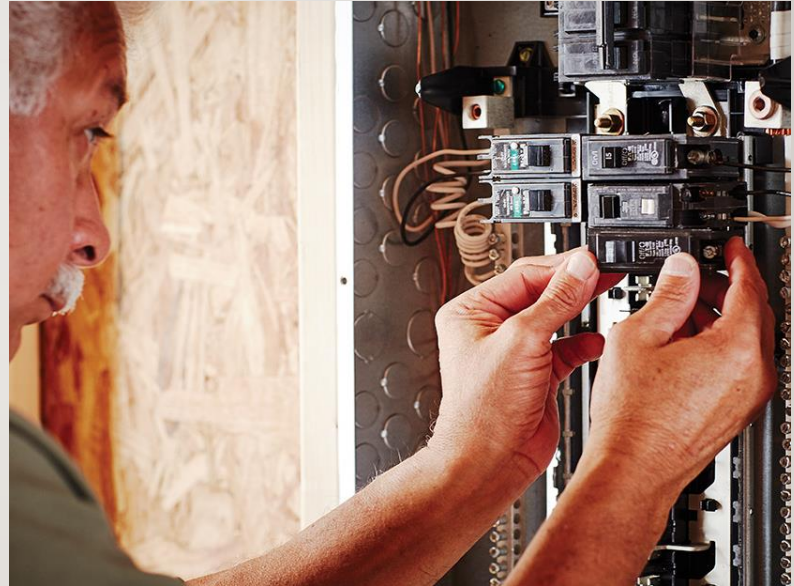
ELECTRICAL OUTLETS

- Check for adequate electrical outlets in each room.
- This helps avoid the use of extension cords and overloading circuits.



ELECTRICAL PANEL

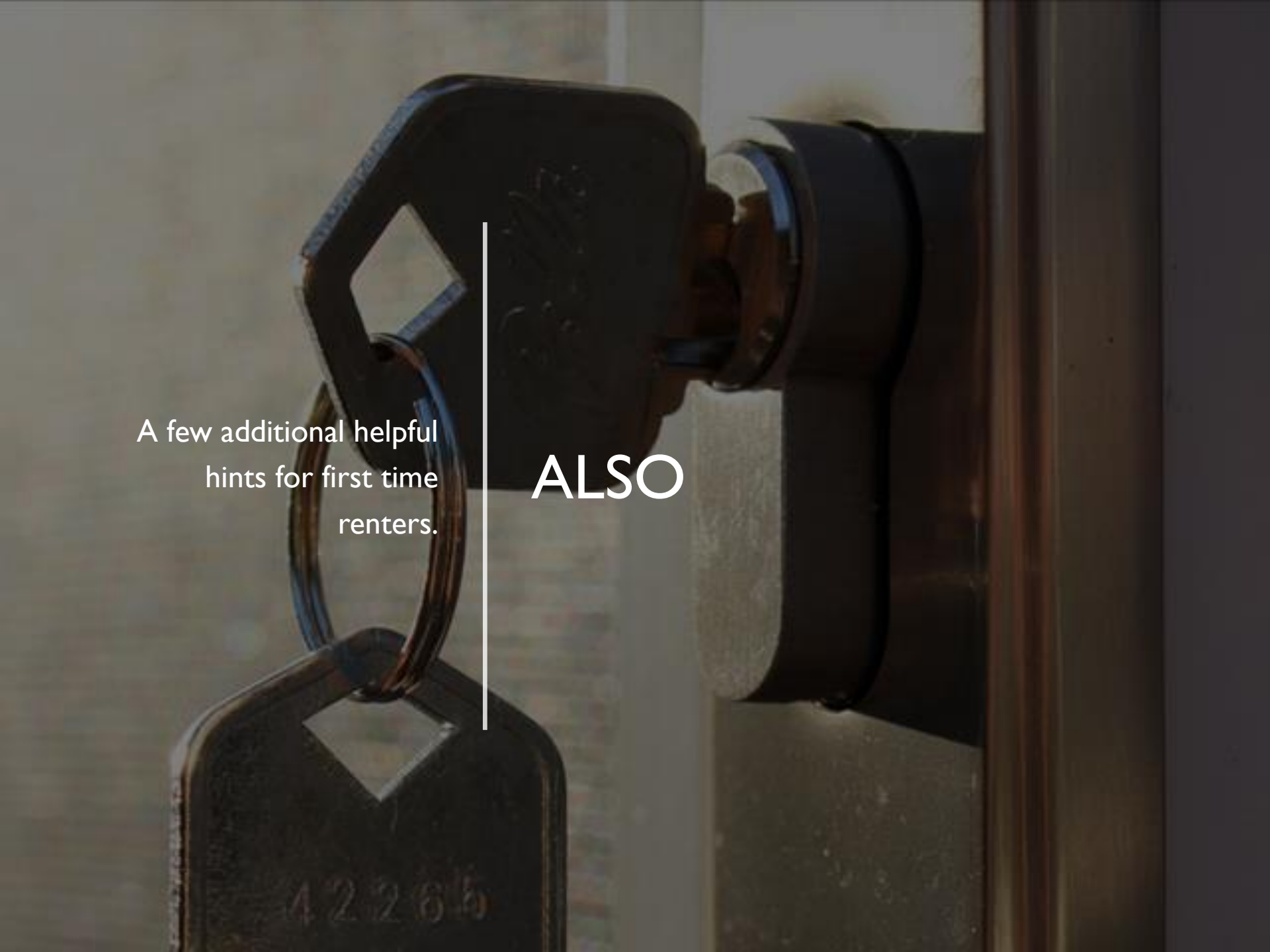
- Know where and how to turn off the electricity. Check that the circuit breakers are clearly labeled.



MOST COMMON FIRE STARTERS

Cooking, candles, and smoking
cause most apartment fires.





A few additional helpful
hints for first time
renters.

ALSO

A blue rectangular box containing the text "Renters Insurance" in white, bold, sans-serif font. The text is stacked in two lines: "Renters" on top and "Insurance" below it.

**Renters
Insurance**

RENTERS INSURANCE

You need it! The property owner's insurance does not cover personal property or liability.

NOISE

- Ask management about the rules concerning noise, quiet hours, guests, and parties. Be sure you can live with those rules before you sign a rental agreement.



MANAGEMENT



- Keep the name and phone number of the apartment manager handy. Know whom to call for electrical and plumbing repairs and emergencies.

SOCIAL MEDIA

- Never reveal travel or recreation plans on social media. Wait and recount adventures when back home.





HOME SWEET HOME

Knowledge and advance planning
can help keep you safe and secure.

LifeSmarts is:

- An educational program teaching teens and tweens important real-life knowledge
- A teaching toolbox. [Check out our resources](#)
- An opportunity for students to gain leadership skills, and fulfill [community service requirements](#)
- A chance to develop strong partnerships with national groups such as FBLA and FCCLA

Visit LifeSmarts at lifesmarts.org